



MINIVERG® INTERLOCKING PLAIN TILE DRY VERGE SYSTEM

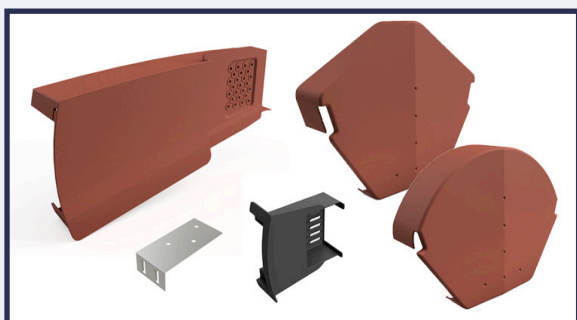
15 YEAR GUARANTEE

The Interlocking Plain Tile Dry Verge System has been manufactured to prevent weather ingress and reliance on mortar at the roof edge. Compatible with all interlocking plain tile types and suitable for use on new build or refurbishment.

FEATURES AND BENEFITS

- Suits all single lap interlocking plain tiles between 170mm and 200mm batten gauges
- Designed to minimise water run-off staining on the verge and gable wall
- Clip-over design for fast installation
- Dry fix products eliminate the mortar installation and maintenance issues
- Secure single nail fixing when used with optional batten end clip. No special fixings required
- Universal eaves starter unit for all applications and one discreet colour
- Starter unit designed to avoid gutter interference and slotted for ease of adjustment
- Starter unit and ridge cap kits include stainless steel screws and wall plugs
- Universal angle and half-round ridge end cap options
- High heat distortion resistance compared to PVC
- UV stabilised for long term performance

PRODUCT OPTIONS



♻️ Slate grey dry verges and ridge caps contains up to 100% recycled PPC

MATERIAL

Polypropylene

PRODUCT CODES AND COLOUR

HD IPTDV	Verge unit	Black, Slate Grey, Dark Brown, Antique Red, Terracotta
HD IPTDV/HR	Half-round ridge end cap	Black, Slate Grey, Dark Brown, Antique Red, Terracotta
HD IPTDV/AR	Angle ridge end cap	Black, Slate Grey, Dark Brown, Antique Red, Terracotta
HD IPTDV/ST	Starter unit	Black only
HD IDV/BC	Batten End Clip	Galvanised

TECHNICAL INFORMATION

COMPLIES WITH BS 8612

The HD IPTDV dry verge systems provide a fixing for the verge tiles for use in the wind zones 1 to 5 in accordance with BS 8612:2018 Table C.1.

RELATED PRODUCTS



CON6+ Dry Fix Ridge & Hip System
Includes a ventilated membrane with broad corrugated adhesive strips, patented gaskets, stainless steel straps and fixing screws, code: CON6



Interlocking Plain Tile Vent
A very discreet universal tile ventilator designed to replace one interlocking double plain concrete tile to complete an uninterrupted roofscape. code: HD TV10/11



Individual Soaker - Interlocking Plain Tiles
Create a weatherproof joint at abutments, code: HD DTS.
Also available, the individual soaker for interlocking slates, code: HD RCS



INTERLOCKING DRY VERGE SYSTEM COMPATIBILITY

CREST	
Double Pantile	IDV
Double Roman	IDV
Planum	IDV
V10	MV20

FORTICRETE	
Gemini	IPTDV
Minislate	IPTDV
Senator	IDV
SL8	THIN
V2	IDV

EDILIANS	
Alpha 10	IDV ⁽⁴⁾
Arboise	MV20
Beauvoise	MV20
HP10	IDV ⁽³⁾
HP17	IDV ⁽²⁾

BREEDON	
Double Roll	IDV
Elite	THIN
Flat	IDV
Square Top	IDV

MARLEY	
Anglia Plus	IDV
Ashmore	IPTDV
Duo Modern	IDV
Double Roman	IDV
Edgemere	THIN
Ludlow Major	IDV
Ludlow Plus	IDV
Malvern	IDV
Marquess	MV20
Mendip	IDV
Modern	IDV
Monarch	MV20
Wessex	IDV

BMI (REDLAND)	
Cambrian	MV20
Double Roman	IDV
Duo Plain	IPTDV
Fenland	IDV
Grovebury	IDV
Landmark Double Pantile	IDV
Landmark Slate 10	THIN
Mini Stonewold	IDV
Norfolk Pantile	IDV
Regent	IDV
Renown	IDV
Richmond	THIN
Richmond 10	THIN
Saxon 10	THIN
Stonewold MKII	IDV

RUSSELL	
Argyll	IDV
Bute	THIN ⁽²⁾
Cheviot	IDV
Derwent	IDV
Double Roman	IDV
Galloway	THIN
Grampian	IDV
Highland	IDV
Lothian	THIN
Moray	THIN
Pennine	IDV
Polden	THIN

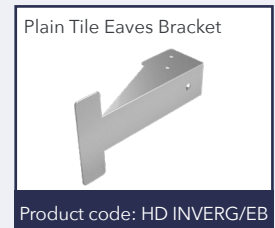
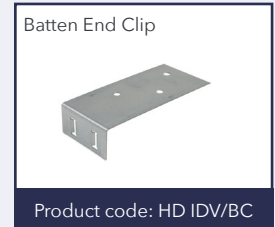
WIENERBERGER (SANDTOFT)	
20/20	MV20
Balmoral	MV20
Britlock	MV20 ⁽¹⁾ THIN ⁽⁵⁾
Calderdale Edge	IDV
Calderdale Slate	IDV
Cassius	THIN
Danum TLE	IDV
Double Pantile	IDV
Double Roman	IDV
Dual Calderdale	IDV
Dual TLE	THIN
Lindum	IDV
Olympus	IDV
Neo Pantile	IDV
Rivius	THIN
Shire Pantile	IDV
Standard Pattern	IDV
TLE	THIN

MANNOK (QUINN)	
Devenish	THIN
Locherne	IDV
Rathmore	THIN
Western Slate	IDV

DOUBLE LAP TILES	
Plain Tiles	INVERG

F P McCANN	
Double Roman	IDV
Round Top	IDV
Square Top	IDV
Thin Flat	THIN

- ¹ Batten gauge 240 to 260mm
- ² Down to batten gauge 260mm
- ³ Batten gauge 330 to 355mm
- ⁴ Batten gauge 330 to 355mm
- ⁵ Batten gauge 260 to 285mm with continuous verge batten



♻️ Slate grey dry verges and ridge caps contains up to 100% recycled PP